

Some internal modifications has been proposed. This is not what will be approved.
 The New York Professional Engineer (PE) License No. 13039, since the proposed modifications would be approved.
 Sohan Vaidya
 29/9/21
 Project Engineer
 Chief Architect
 New York Professional Engineering Authority
 New York Professional Engineering Authority
 New York Professional Engineering Authority

GENERAL NOTES

1. ALL DIMENSIONS ARE UNLESS NOTED OTHERWISE SPECIFIED.
2. ALL FINISHES TO BE AS NOTED.
3. ALL EXTERIOR WALLS ARE TO BE WITH ANTERIOR WALLS AS SHOWN.
4. THIS DRAWING SHALL BE READ IN CONJUNCTION WITH DETAILS & SPECIFICATIONS.
5. PROVISIONS FOR CONSTRUCTION SHALL BE AS NOTED IN DETAILS & SPECIFICATIONS.
6. BEFORE THE EXECUTION OF WORK.
7. DETAIL DRAWINGS SHALL SUPERSEDE SMALLER SCALE DRAWINGS.
8. CONSULTATION TO CHECK & VERIFY ALL DIMENSIONS BEFORE EXECUTION.

DOOR & WINDOW SCHEDULE

MARK	WIDTH	HEIGHT	LINTEL	REMARKS
W1	2000	2150	2150	
W2	1800	2150	2150	
W3	1950	2150	2150	
W4	1500	2150	2150	
W5	1500	2150	2150	
W6	1500	2150	2150	
W7	1500	2150	2150	
W8	1500	2150	2150	
W9	1500	2150	2150	
W10	1500	2150	2150	
W11	1500	2150	2150	
W12	1500	2150	2150	
W13	1500	2150	2150	
W14	1500	2150	2150	
W15	1500	2150	2150	
W16	1500	2150	2150	
W17	1500	2150	2150	
W18	1500	2150	2150	
W19	1500	2150	2150	
W20	1500	2150	2150	
W21	1500	2150	2150	
W22	1500	2150	2150	
W23	1500	2150	2150	
W24	1500	2150	2150	
W25	1500	2150	2150	
W26	1500	2150	2150	
W27	1500	2150	2150	
W28	1500	2150	2150	
W29	1500	2150	2150	
W30	1500	2150	2150	

APPLICANT

NANESH KUMAR JAIN
 LICENSE NO. 050005011
 110 WEST 25TH STREET, NEW YORK, NY 10011
 212 512 8212

ARCHITECT

saient
 110 WEST 25TH STREET, NEW YORK, NY 10011
 212 512 8212

ARCHITECT'S SIGNATURE

[Signature]
 SAIENT ARCHITECTS
 110 WEST 25TH STREET, NEW YORK, NY 10011
 212 512 8212

CERTIFICATE OF ARCHITECT

I hereby certify that the architectural drawings on this project are the work of the architect, and that the architect is a duly licensed architect in the State of New York.

CERTIFICATE OF STRUCTURAL ENGINEER

I hereby certify that the structural drawings on this project are the work of the structural engineer, and that the structural engineer is a duly licensed structural engineer in the State of New York.

CERTIFICATE OF GEO-TECH ENGINEER

I hereby certify that the geotechnical drawings on this project are the work of the geotechnical engineer, and that the geotechnical engineer is a duly licensed geotechnical engineer in the State of New York.

CONSULTANT ARCHITECT

saient
 110 WEST 25TH STREET, NEW YORK, NY 10011
 212 512 8212

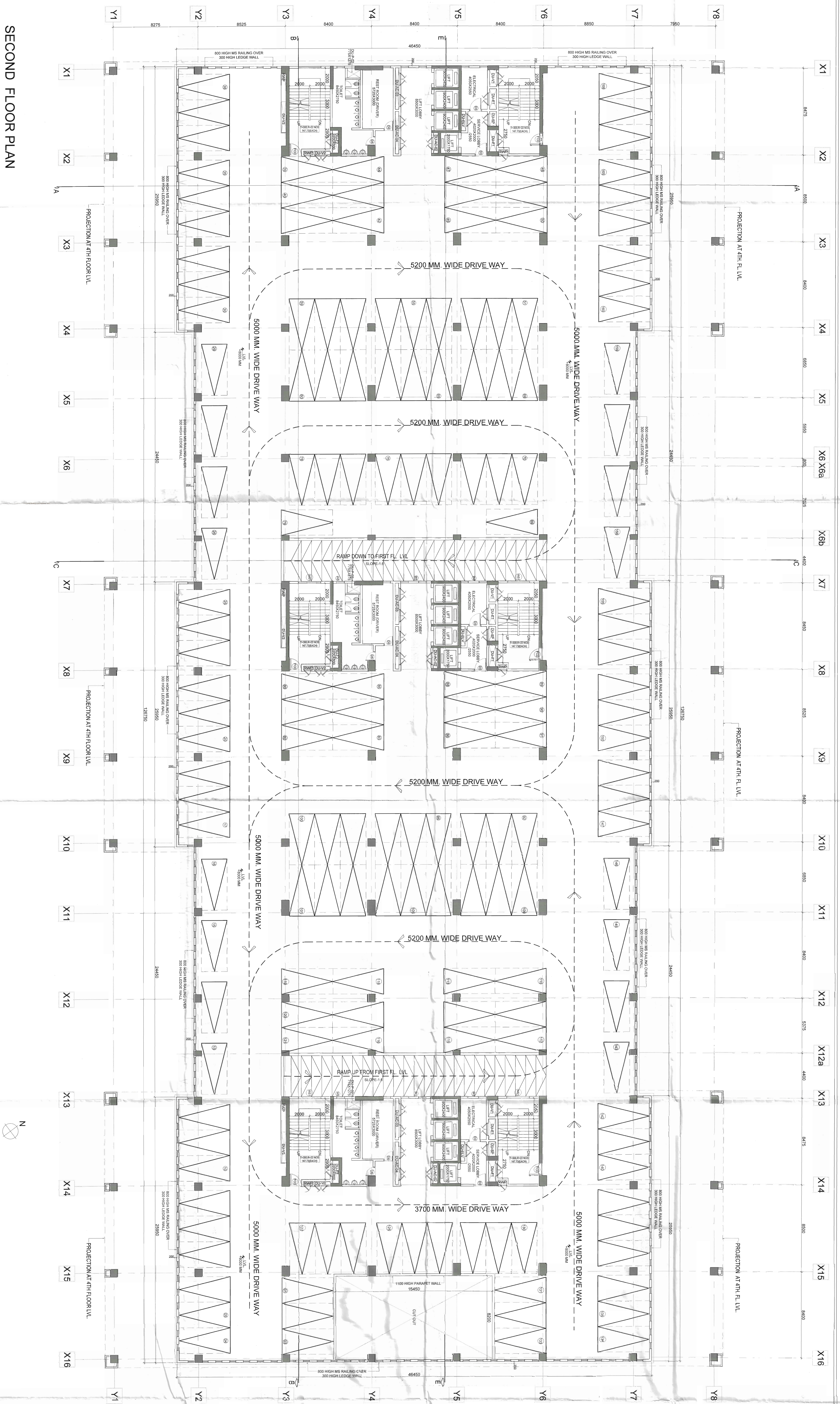
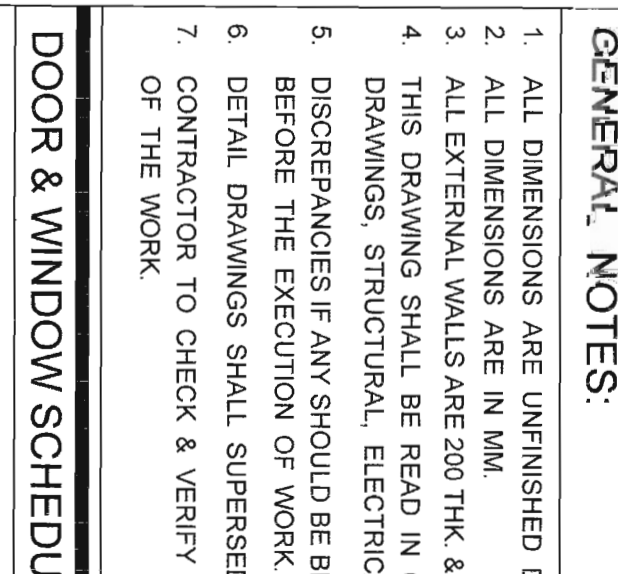
PROJECT

RNO COMMERCIAL (PRINCIPAL USE) (R+C-11)
 RNO DEVELOPMENT AT PLOT NO-II F113 IN NEW TOWN,
 RAJARHAT NORTH 24 PGS. WB.

ARCHITECTURAL DRAWING

COMMERCIAL BLOCK
 SECOND FLOOR PLAN (MODIFIED)

SCALE: 1:100
 DATE: 08/04/21
 DRAWN BY: SB
 CHECKED BY: SS
 DWG NO: MUD/ARCH/IC/103



SECOND FLOOR PLAN

SANCTION DRAWINGS

THIS DRAWING IS THE PROPERTY OF THE ARCHITECT. IT SHALL NOT BE COPIED OR REPRODUCED IN ANY MANNER WHATEVER AND SHALL BE USED ONLY FOR THE PROJECT ISSUED FOR. THIS DRAWING TO BE EXECUTED ON SITE SUBJECT TO THE APPROVAL OF COMPETENT AUTHORITY.